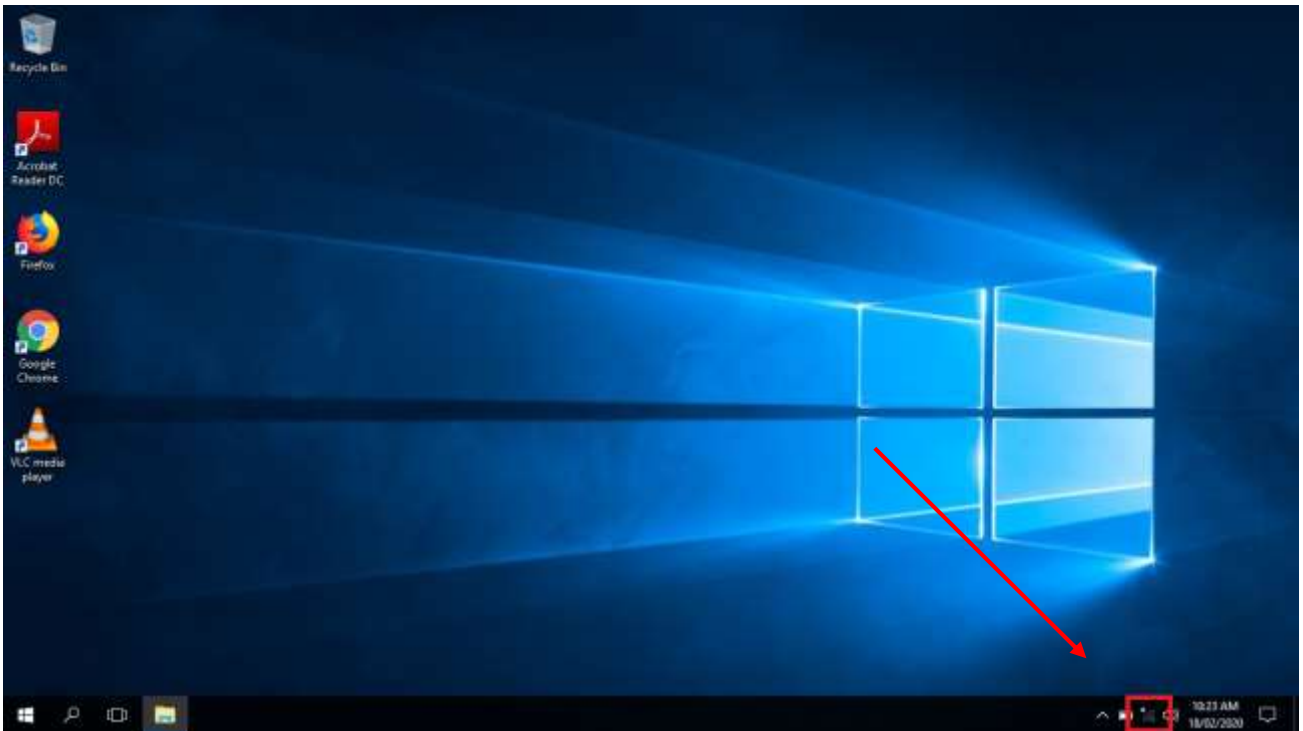




Connecting BYOD to WiFi (Windows)

- You need to have an active domain username and password (used to log into school computers) if you have forgotten or can't get on, request a password change and log into a school computer first to change your password, then continue on with this form.
- Log into BYOD device.
- Open WiFi symbol down the bottom right of your screen.



- Click on "GHS_Secure".
- Input School computer login information, for example:
 - o ghs\firstname.lastname
 - o *Password*



Middle Campus: 535 Old Sturt Highway, Glossop SA 5344
P: (08) 8583 2004 • Fax: (08) 8583 2014

Senior Campus: 12 Stadium Drive, Berri SA 5343 P:
P: (08) 85952677 • Fax: (08) 85952688

www.glossophs.sa.edu.au | dl.0776_admin@schools.sa.edu.au

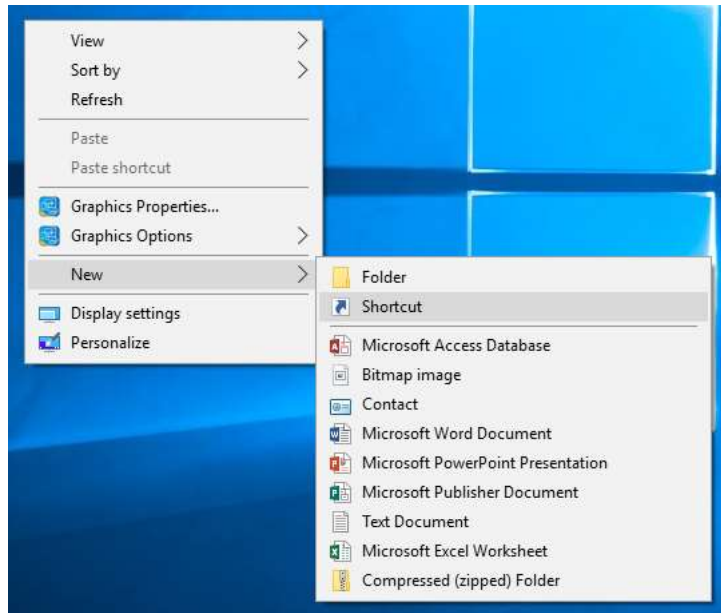


Government of South Australia
Department for Education

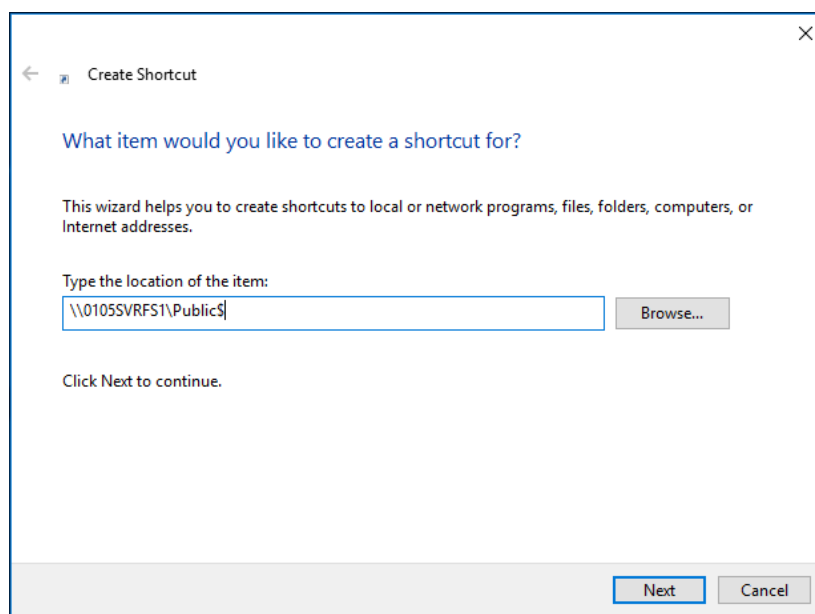
GLOSSOP HIGH SCHOOL



- Right click on home screen of the device .
- Click “New” then “Shortcut”.



- In location of the item, input “\\0105SVRFS1\Public\$” this is the path for the public drive.



- Once clicking “Next” a login screen will appear, input the same login credentials as for the WiFi and click “Remember my Credentials” then click next again.



Middle Campus: 535 Old Sturt Highway, Glossop SA 5344
P: (08) 8583 2004 • Fax: (08) 8583 2014

Senior Campus: 12 Stadium Drive, Berri SA 5343 P:
P: (08) 85952677 • Fax: (08) 85952688

www.glossophs.sa.edu.au | dl.0776_admin@schools.sa.edu.au



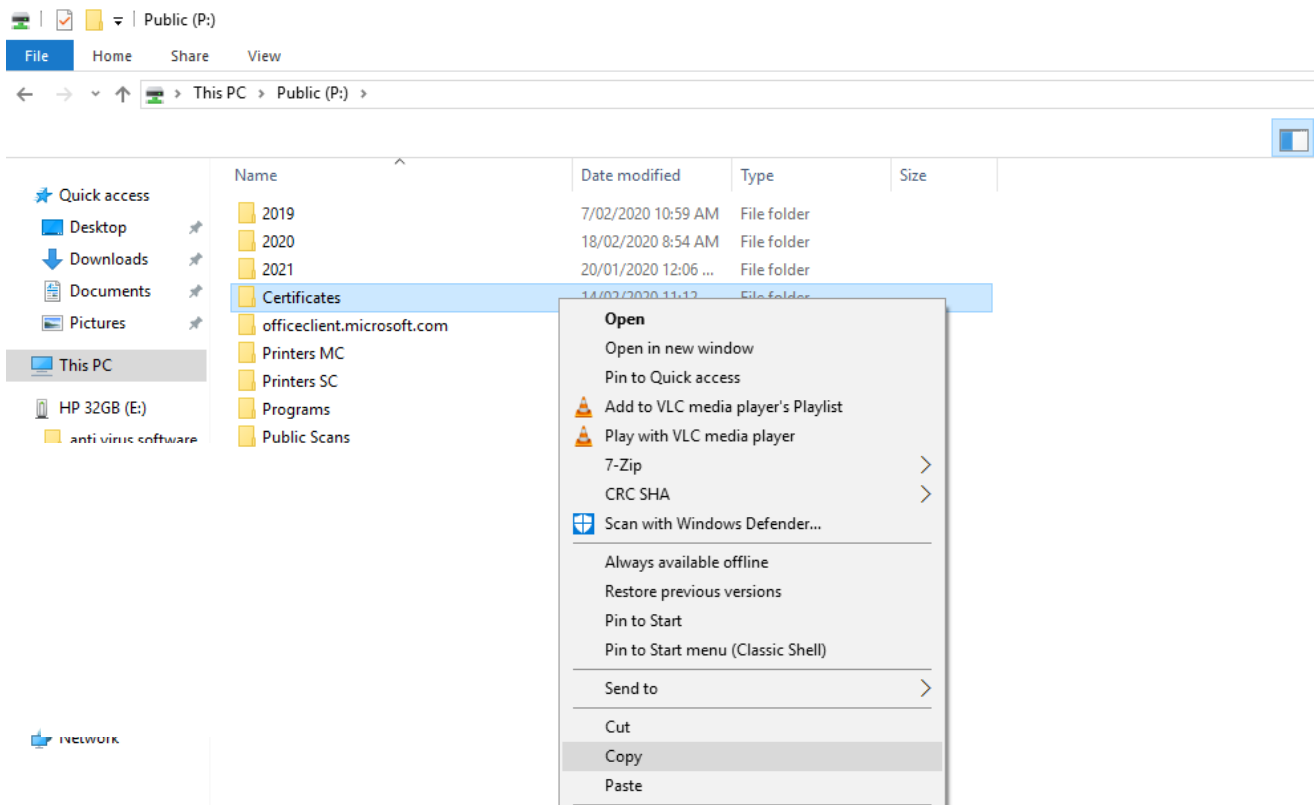
Government of South Australia
Department for Education



- Now add another shortcut to the home screen, but this time for your personal network drive.
- This time in the location of the item, you will need to enter in the correct details (server path, year and name).
 - o If you are a **Senior Campus** student, year 11 or 12 then input “\\0105SVRFS1\homedir\$\2021\Firstname.Lastname” replacing the year with the year you will graduate year 12, as well as your name.
 - o If you are a **Middle Campus** student, year 8, 9 and 10 then input “\\0329SVRFS1\homedir\$\2024\Firstname.Lastname” replacing the year with when you will graduate year 12, as well as your name.

Install Certificates for internet access

- Open the public drive folder and copy the folder called “Certificates”.



Middle Campus: 535 Old Sturt Highway, Glossop SA 5344
P: (08) 8583 2004 • Fax: (08) 8583 2014

Senior Campus: 12 Stadium Drive, Berri SA 5343 P:
P: (08) 85952677 • Fax: (08) 85952688

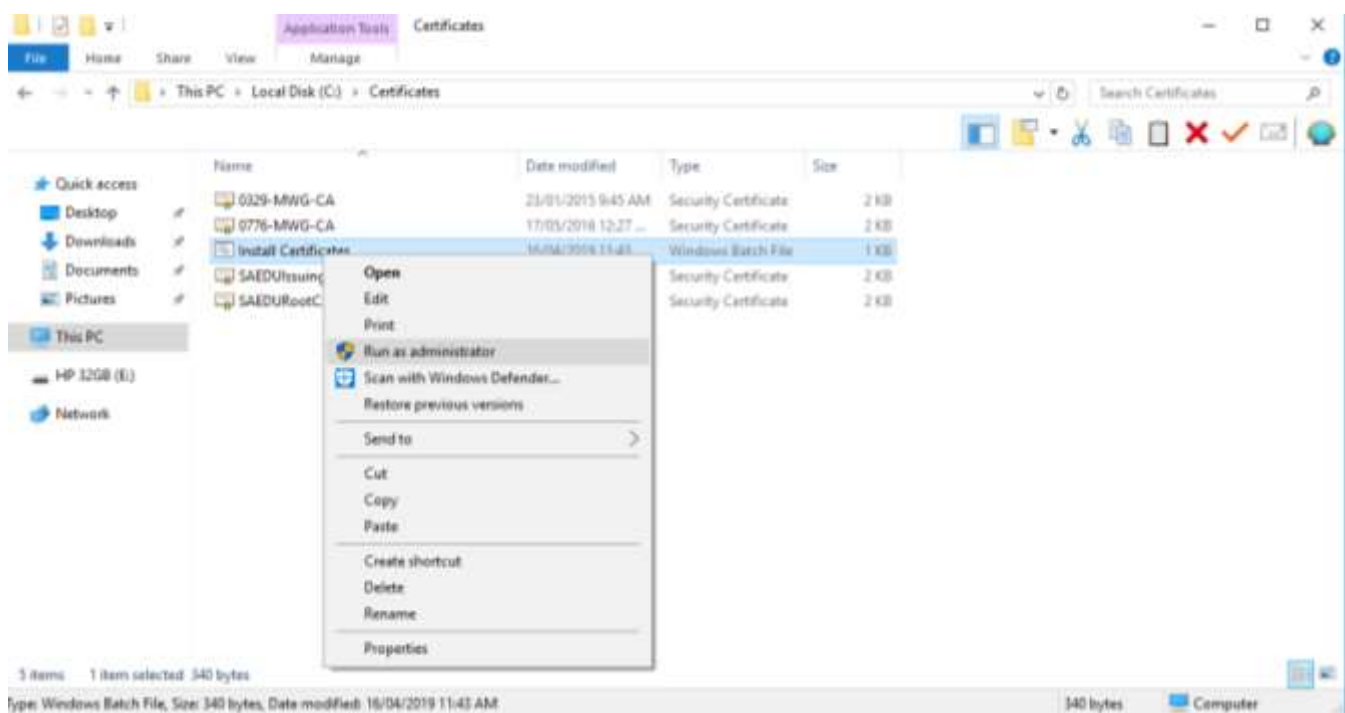
www.glossophs.sa.edu.au | dl.0776_admin@schools.sa.edu.au



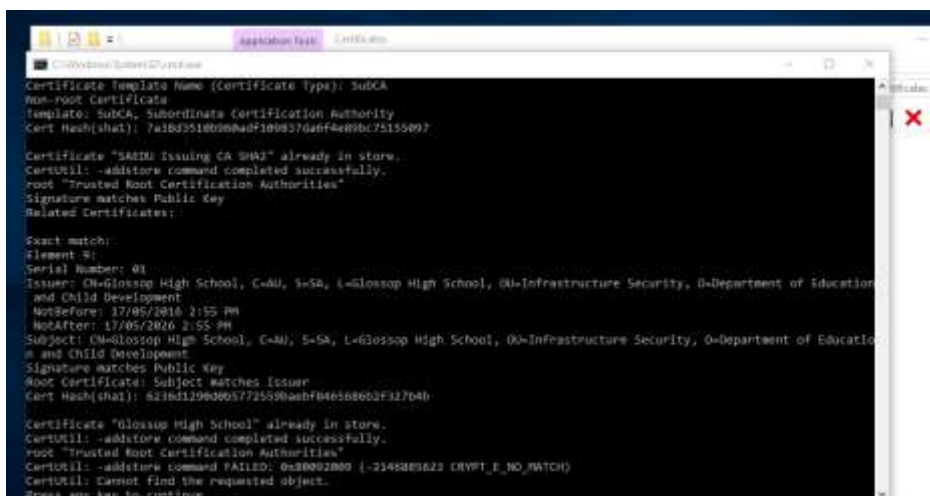
Government of South Australia
Department for Education



- Paste this folder on your computers C:\ drive (Computers main hard drive) you can delete this folder once they're installed in a few steps.
- Open the certificates folder and right click on the "Install Certificates.bat" file and then click "run as administrator".



- Click yes on the popup for Admin rights, you should see a black box popup and it will run some code.



Middle Campus: 535 Old Sturt Highway, Glossop SA 5344
P: (08) 8583 2004 • Fax: (08) 8583 2014

Senior Campus: 12 Stadium Drive, Berri SA 5343 P:
P: (08) 85952677 • Fax: (08) 85952688

www.glossophs.sa.edu.au | dl.0776_admin@schools.sa.edu.au



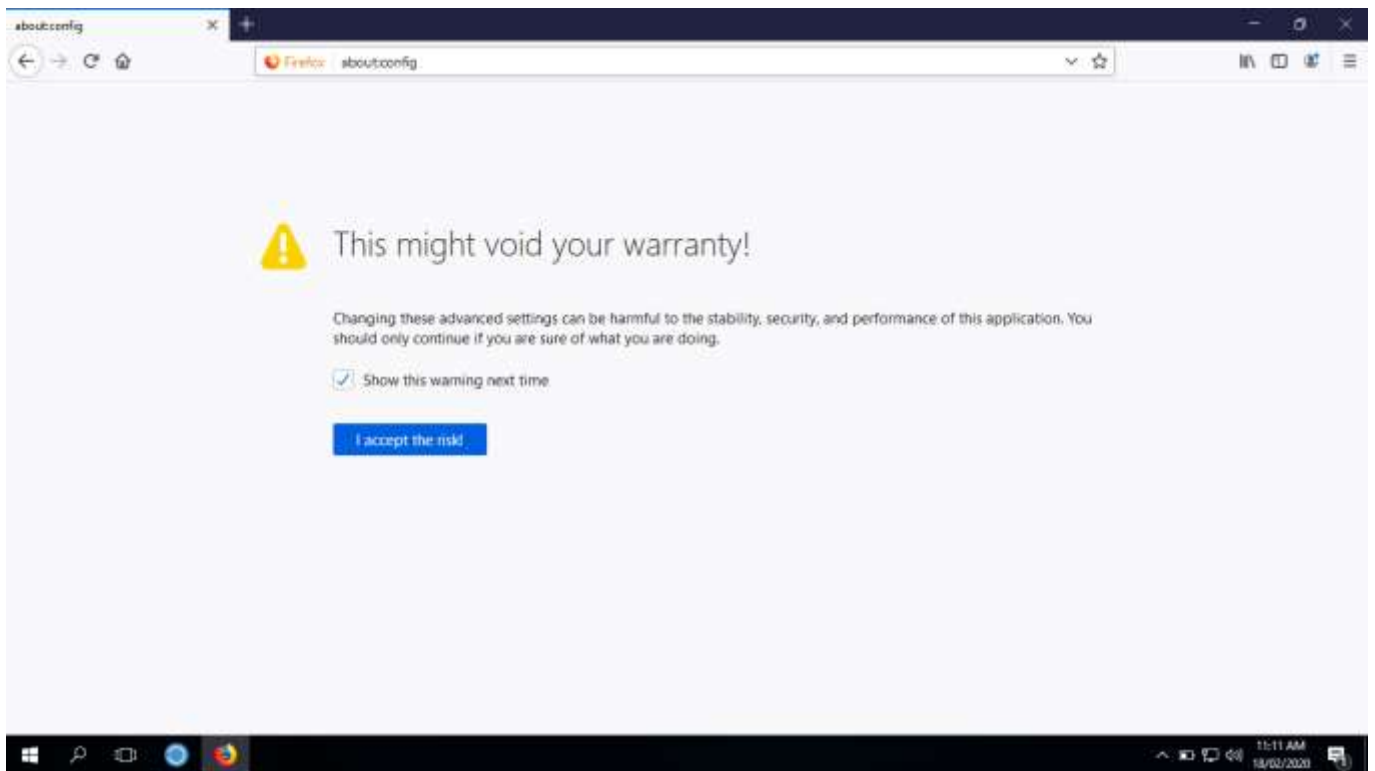
Government of South Australia
Department for Education



- Once its completed you can press any button and the command prompt will close, you can delete the certificates folder now.
- You should be able to connect to the internet on this machine.

Firefox users

- If you use firefox you will need to do a few more steps.
- Open firefox and type “about:config” without quotations, in the URL bar at the top.



Middle Campus: 535 Old Sturt Highway, Glossop SA 5344
P: (08) 8583 2004 • Fax: (08) 8583 2014

Senior Campus: 12 Stadium Drive, Berri SA 5343 P:
P: (08) 85952677 • Fax: (08) 85952688

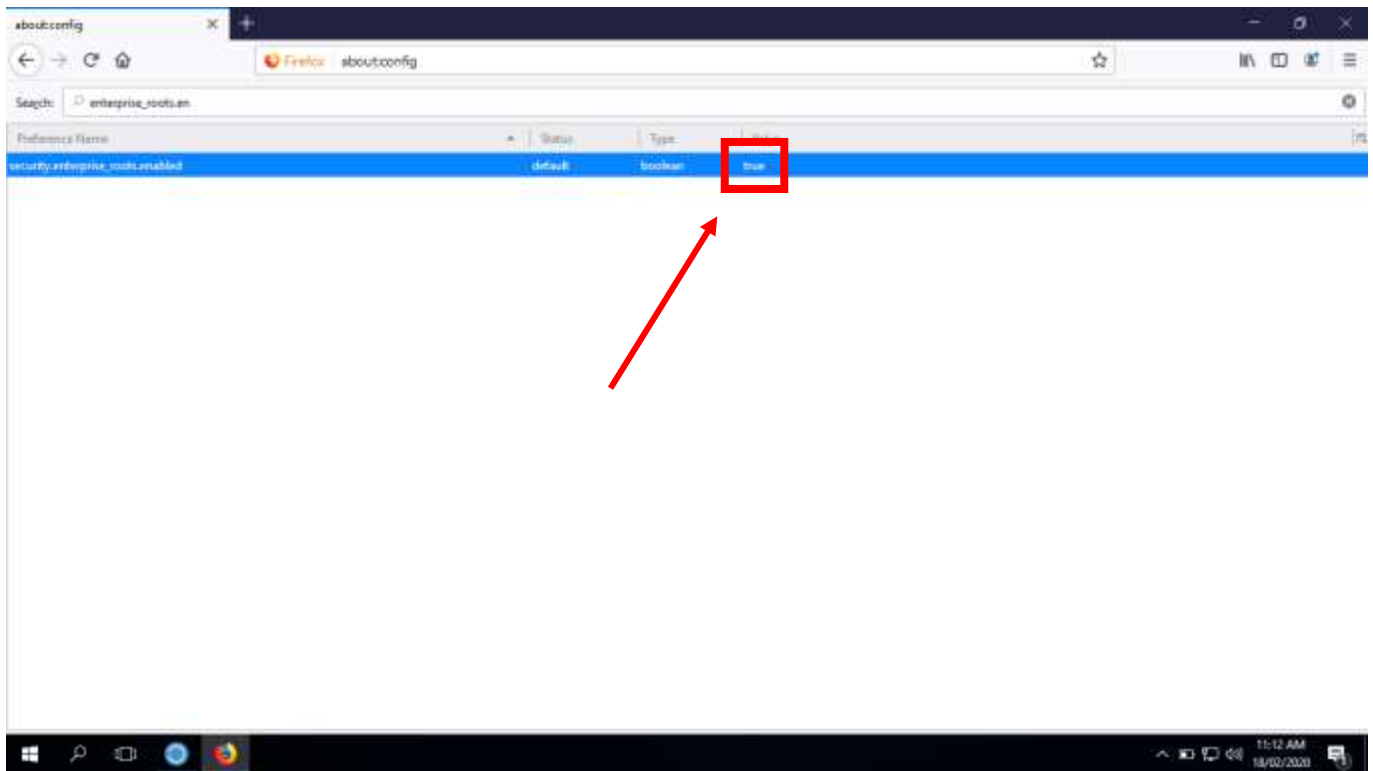
www.glossophs.sa.edu.au | dl.0776_admin@schools.sa.edu.au



Government of South Australia
Department for Education



- Click on “I accept the risk!” and type “security.enterprise_roots.enabled” in the search bar.
- Double click on “security.enterprise_roots.enabled” it should now say “TRUE” under the value tab.



- You're all set to use the internet at Glossop High School.



Middle Campus: 535 Old Sturt Highway, Glossop SA 5344
P: (08) 8583 2004 • Fax: (08) 8583 2014

Senior Campus: 12 Stadium Drive, Berri SA 5343 P:
P: (08) 85952677 • Fax: (08) 85952688

www.glossophs.sa.edu.au | dl.0776_admin@schools.sa.edu.au



Government of South Australia
Department for Education



Connecting to Printers

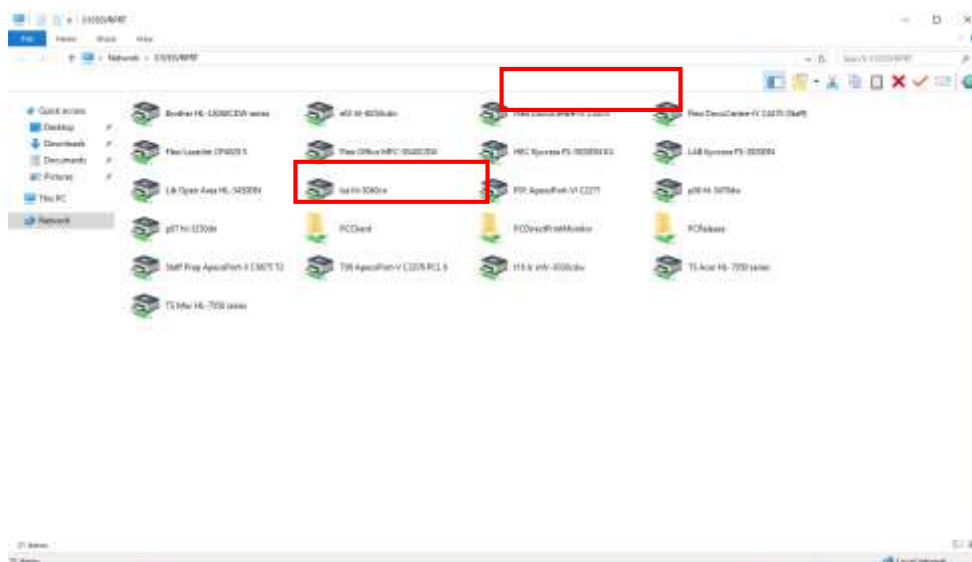
- In the same way we created shortcuts to your personal drive and the public drive, we need to make another shortcut to the Print server where the connections are.

Senior Campus

- In location of the item, input "\\0105SVRPRT" this is the path for the Print server.

Middle Campus

- In location of the item, input "\\0329SVRPRT" this is the path for the Print server.
- Once the shortcut has been created, open the shortcut and double click on the best suited printer for easiest access to your location, for example, Till Wing or Symonds Wing or Resource Centre for the main photocopiers. (Shortcuts to all printers can also be found on the public drive.)



Middle Campus: 535 Old Sturt Highway, Glossop SA 5344
P: (08) 8583 2004 • Fax: (08) 8583 2014

Senior Campus: 12 Stadium Drive, Berri SA 5343 P:
P: (08) 85952677 • Fax: (08) 85952688

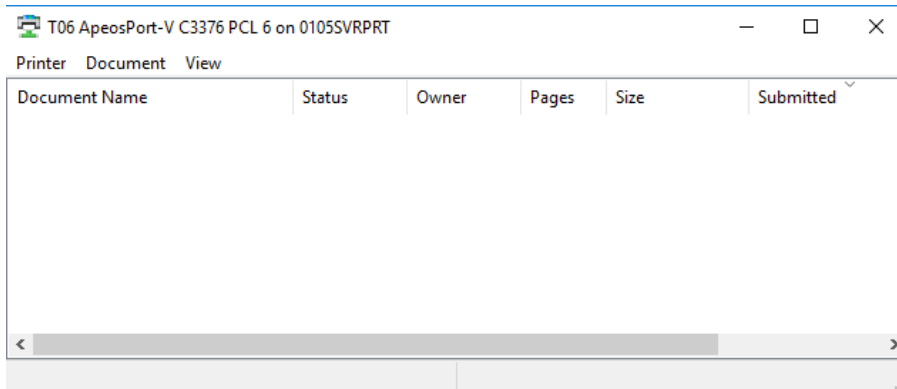
www.glossophs.sa.edu.au | dl.0776_admin@schools.sa.edu.au



Government of South Australia
Department for Education



- This will install the drivers for the printer and open a small window which demonstrates that the connection is complete. If at a later time the printers seem to be disconnected, open the shortcut to the Printer Server to re-establish the connection.



If you require the office suite to be installed including Word, Excel and PowerPoint or just want access to the web apps, Please refer to the extra documentation provided.



Middle Campus: 535 Old Sturt Highway, Glossop SA 5344
P: (08) 8583 2004 • Fax: (08) 8583 2014

Senior Campus: 12 Stadium Drive, Berri SA 5343 P:
P: (08) 85952677 • Fax: (08) 85952688

www.glossophs.sa.edu.au | dl.0776_admin@schools.sa.edu.au



Government of South Australia
Department for Education